



# FASTENER HARDWARE FOR 80/20®



## CAP SCREWS — SAE & METRIC

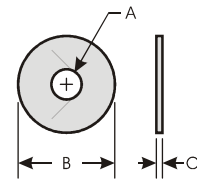


THREAD SIZE	TYPE	LGTH	PART NO.	PRICE EACH
SAE 1/4-20	BUTTON HEAD	3/8"	BH014038C	\$.070
		1/2"	BH014012C	\$.080
		5/8"	BH014058C	\$.090
		3/4"	BH014034C	\$.100
	SOCKET HEAD	3/8"	SH014038C	\$.071
		1/2"	SH014012C	\$.058
		5/8"	SH014058C	\$.065
		3/4"	SH014034C	\$.067
		7/8"	SH014078C	\$.075
		1"	SH014100C	\$.083
SAE 5/16-18	BUTTON HEAD	1/2"	BH516012C	\$.140
		5/8"	BH516058C	\$.160
		3/4"	BH516034C	\$.180
		7/8"	BH516078C	\$.200
		1"	BH516100C	\$.220
	SOCKET HEAD	3/8"	SH516038C	\$.144
		1/2"	SH516012C	\$.124
		5/8"	SH516058C	\$.124
		3/4"	SH516034C	\$.127
		7/8"	SH516078C	\$.137
1"	SH516100C	\$.140		
1-1/4"	SH516114C	\$.158		

THREAD SIZE	TYPE	LGTH	PART NO.	PRICE EACH
METRIC M5x0.8mm	BUTTON HEAD	10mm	BH0510M	\$.11
		12mm	BH0512M	\$.12
		16mm	BH0516M	\$.13
	SOCKET HEAD	10mm	SH0510M	\$.12
		12mm	SH0512M	\$.13
		16mm	SH0516M	\$.15
		20mm	SH0520M	\$.16
		25mm	SH0525M	\$.18
		30mm	SH0530M	\$.20
		METRIC M6x1.0mm	BUTTON HEAD	10mm
12mm	BH0612M			\$.17
16mm	BH0616M			\$.17
20mm	BH0620M			\$.18
25mm	BH0625M			\$.18
SOCKET HEAD	10mm		SH0610M	\$.20
	12mm		SH0612M	\$.20
	16mm		SH0616M	\$.20
	20mm		SH0620M	\$.22
	25mm		SH0625M	\$.22
30mm	SH0630M	\$.22		
35mm	SH0635M	\$.26		
40mm	SH0640M	\$.28		

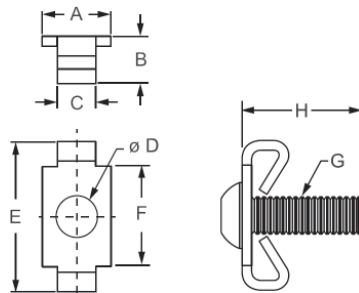
THREAD SIZE	TYPE	LGTH	PART NO.	PRICE EACH
METRIC M8x1.25mm	BUTTON HEAD	12mm	BH0812M	\$.18
		16mm	BH0816M	\$.18
		20mm	BH0820M	\$.20
		25mm	BH0825M	\$.20
	SOCKET HEAD	10mm	SH0810M	\$.21
		12mm	SH0812M	\$.22
		16mm	SH0816M	\$.23
		20mm	SH0820M	\$.23
		25mm	SH0825M	\$.23
		30mm	SH0830M	\$.25
35mm	SH0835M	\$.25		
40mm	SH0840M	\$.31		
50mm	SH0850M	\$.33		
60mm	SH0860M	\$.35		

## ROUND WASHERS

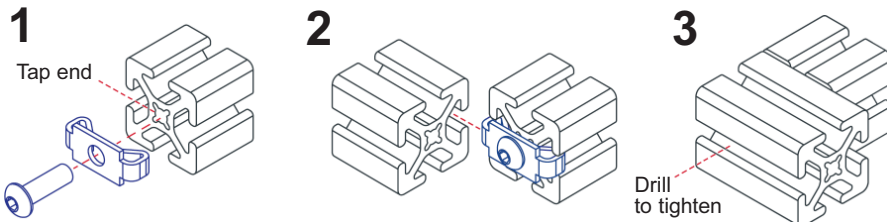


## END FASTENERS

The End Fastener is comprised of a button head socket cap screw and wing clip. The End Fastener provides a fixed, 90 degree, moderate-strength connection that is completely hidden. The winged tabs of the clip prevent the mating profile from rotating. This connection method requires an end tap on the mounting profile and an access hole drilled in the mating profile in order to reach the screw head.



### END FASTENER ASSEMBLY:



Part No.	Series	A	B	C	D	E	F	G	H	Wt.	Price
EX3381	10	.431"	.293"	.240"	.257"	.937"	.625"	1/4-20	.750"	.018 lb	\$2.55
EX3380	15	.625"	.450"	.300"	.340"	1.300"	1.000"	5/16-18	1.000"	.047 lb	\$2.80

Part No.	Fits	A I.D.	B O.D.	C Thick	Price Per Pkg.
WS-1474	1/4-20	.25"	.74"	.065"	\$2.45/100
WS-51687	5/16-18	.31"	.87"	.065"	\$4.30/100
WS-0307	M3	3mm	7mm	.5mm	\$.60/100
WS-0409	M4	4mm	9mm	.8mm	\$.75/100
WS-0510	M5	5mm	10mm	1mm	\$1.00/100
WS-0612	M6	6mm	12mm	1.6mm	\$1.85/100
WS-0816	M8	8mm	16mm	1.5mm	\$3.50/100



## RIGHT HAND TAPS

PART NO.	THREAD	GROUND THREAD LIMITS	PRICE
RHT1420	1/4-20 NC	H3	\$3.40
RHT5618	5/16-18 NC	H3	\$4.70
RHT3816	3/8-16 NC	H3	\$6.60



### T-Handle

Fits 1/4" - 1/2"  
Part No. **EV95907**  
Price ... **\$10.35**



## PLASTIC PROCESS EQUIPMENT, INC.

8303 CORPORATE PARK DRIVE  
MACEDONIA, OHIO 44056-2300  
216-367-7000 • FAX: 216-367-7022  
TOLL FREE: 800-321-0562

6385 MONTESSOURI STREET  
LAS VEGAS, NEVADA 89113-1186  
702-433-6385 • FAX: 702-433-6388  
TOLL FREE: 800-258-8877

www.ppe.com

e-mail: sales@ppe.com

Toll Free: USA, Canada & Mexico

**800-362-0706**

Order Fax: 800-223-8305